

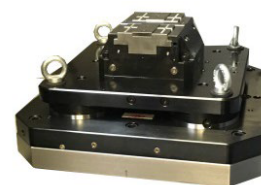
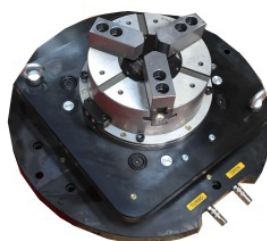
## ROBOTFLEX CU

### ROBOTIC LOADING CELL FOR MACHINING CENTER

The ROBOTFLEX CU is integrated into new or existing 3-axis, 4-axis and 5-axis numerically controlled machining center of all brands.

Thanks to a simple loading concept and an interface without robotic programming, the series changeover time of less than 10 min allows the robotization of very small series, starting from 5 pieces. The loading of raw is easy and fast thanks to many simple and powerful loading strategies. Raw can be stacked to increase the loading capacity. This equipment is suited for both shaped and foundry parts.

The ROBOTFLEX CU allows simple and fast robotization of tens or hundreds of parts with only one vice and one pallet. The cost of use in tools and labor is very low.



Tensioning tools



**ROBOTFLEX**

## TECHNICAL FEATURES :

	CU25	CU70
<b>Basic Equipment features</b>		
Integrated robot brand	Fanuc	Fanuc
Max. dimensions of parts	300/300/300mm	300/300/300mm
Max. weight of parts carried with 2 grippers	2x7kg	2x18 kg
Max. weight of parts carried with 1 gripper	1x10kg	1x20 kg
Blowing system and gripper adjustment tools	✓	✓
Adjustment of clamping jaws without tools	✓	✓
Safe access with radar or safety light curtain	✓	✓
<b>Additional functions</b>		
Automatic curtain	✓	✓
Workpiece tilting for 2nd operation	✓	✓
Set down of workpieces on the floor	✗	✓
Set down of workpieces on trolleys	✓	✓
Set down of workpieces AGV station	✓	✓
Set down of raw on pallet	✗	✓
Set down of raw on AGV station	✓	✓
Clamping system integrated on the machine table		
• Base plate (zero point)	✓	✓
• Tooling plate vise	✓	✓
• Chuck tooling plate	✓	✓
• Multi-vise tooling plate	✓	✓
• Special tool plate	✓	✓

All other requests will be studied.